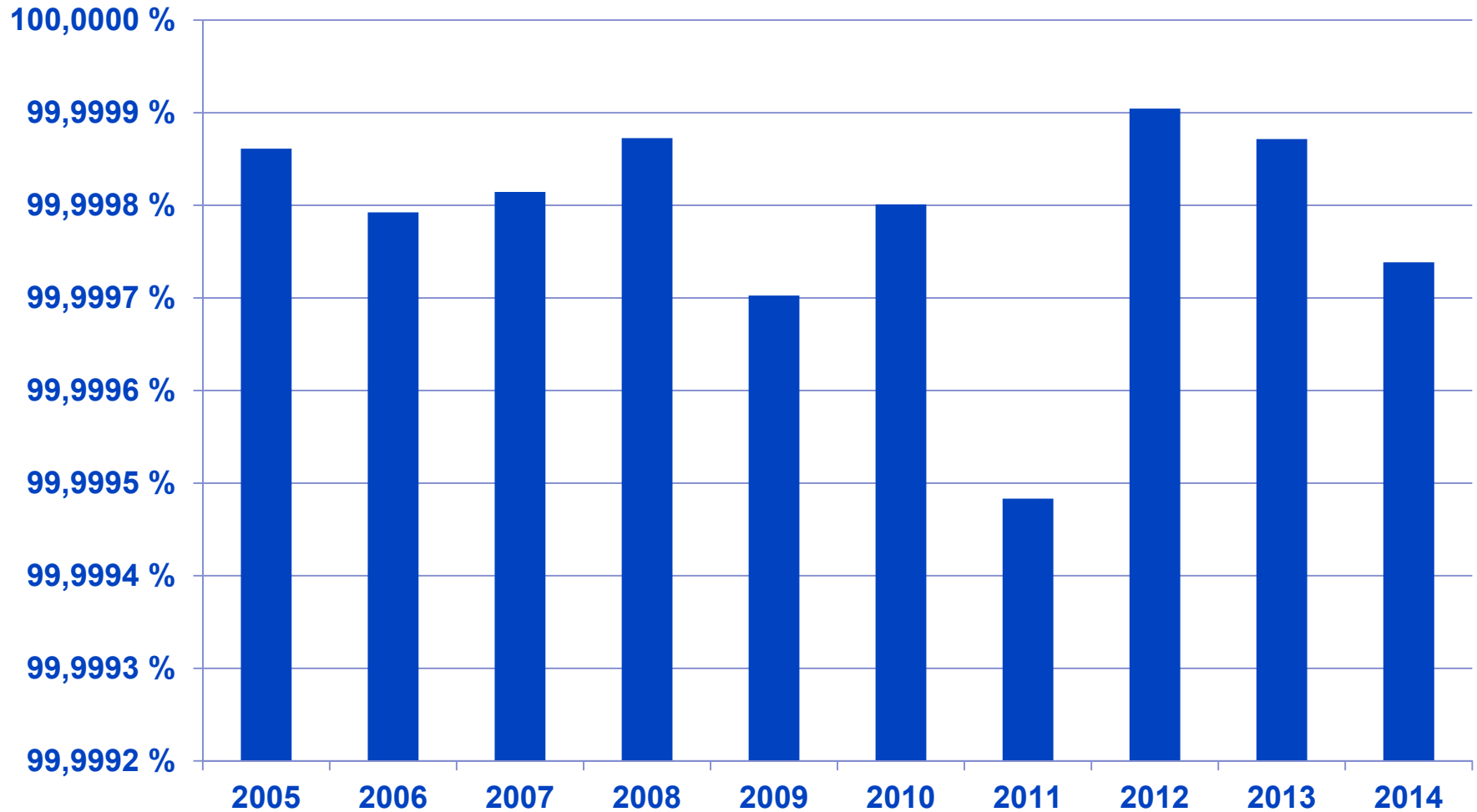




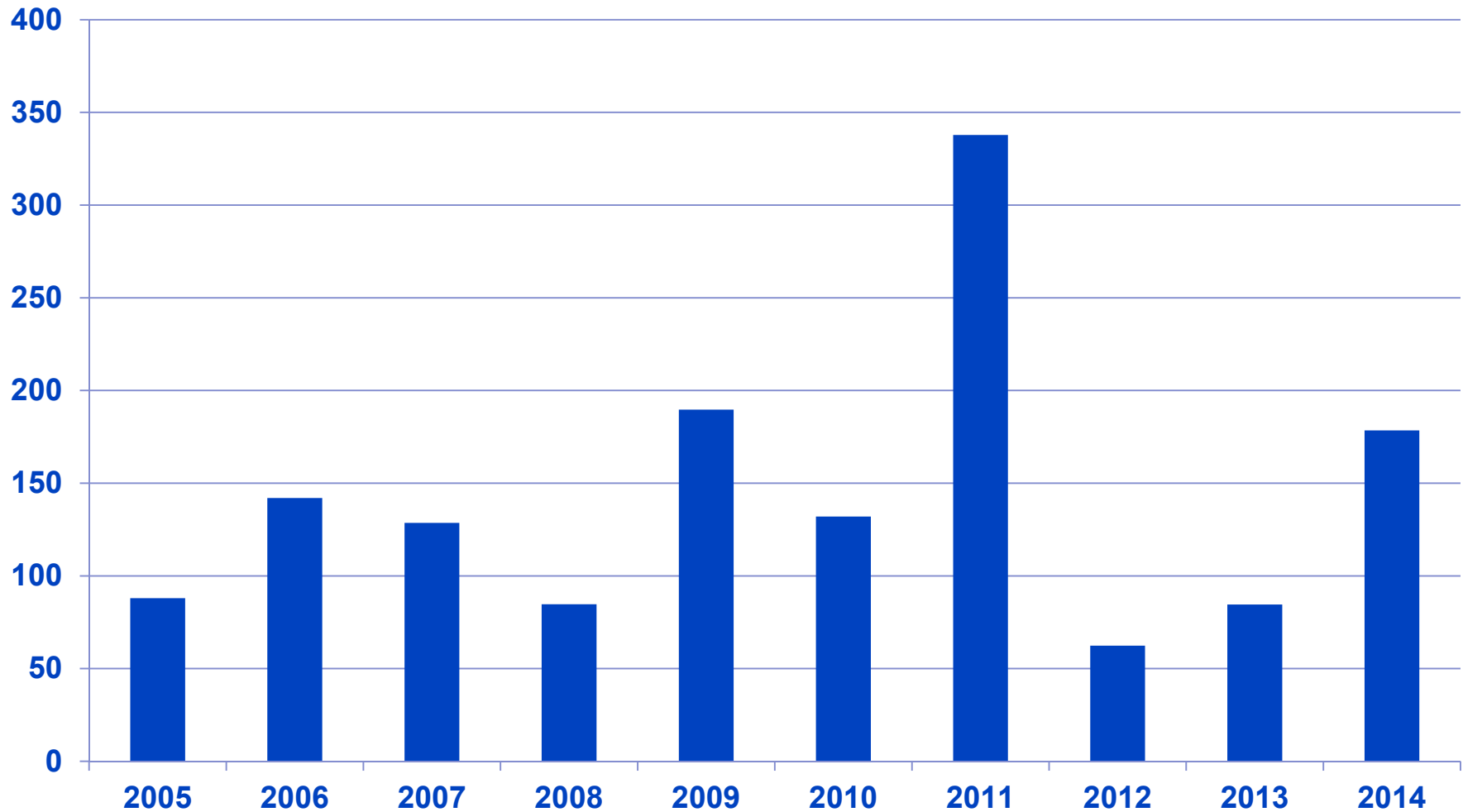
Transmission reliability 2014

Transmission reliability of Fingrid's grid

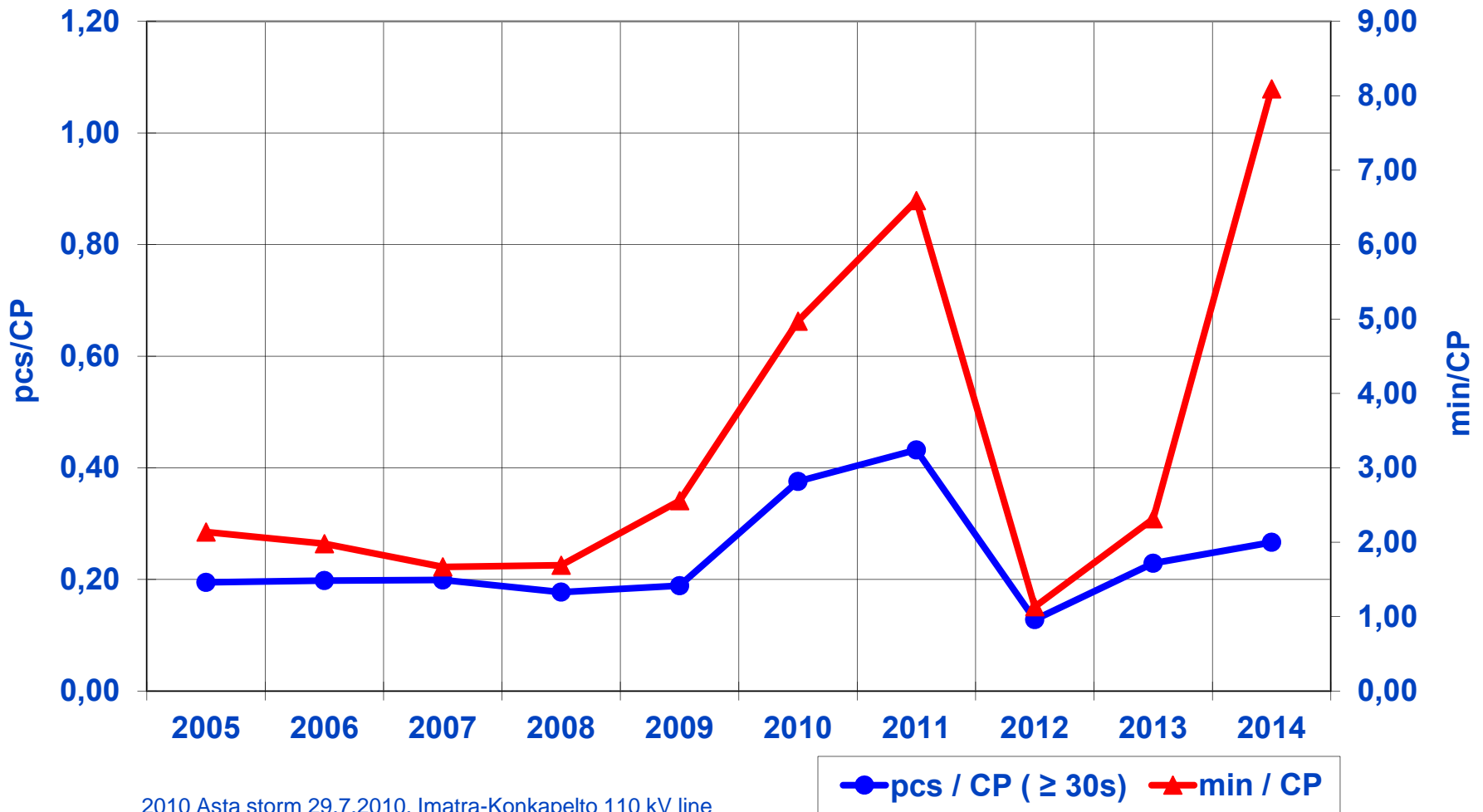


Transmission reliability = energy supplied / (energy supplied + energy not supplied due to disturbances)

Energy Not Supplied (MWh)



Connection point interruptions



2010 Asta storm 29.7.2010, Imatra-Konkappelto 110 kV line

2011 Tapani and Hannu storms 26.-27.12.2011, 110 kV lines Kolsi-Forssa, Hikiä-Nikkilä and Hikiä-Forssa E

2014 Felled tree on 110 kV line Hikiä-Forssa E 24.3.2014, Circuit Breaker faults in Kainuu 28.7.2014

Number and reasons of disturbances

