

Hinta-alue Estlink ja Baltian markkinoiden integrointi pohjoismaiseen sähköpörssiin

20.5.2010

Karri Mäkelä, Nord Pool Spot AS



Agenda

1. Estlink market opening
2. NPS BEMIP project



Elspot-price area was implemented 1.4.2010

Currently there are 11 customers:

Participants	Direct participants	Clearing customer
AS Latvenergo (LV)	x	
AS Nordic Energy Link (LT)		x
Elering OÜ	x	
Eesti Energia AS (EE)	x	
Eesti Energia Kaevandused AS (EE)		x
Eesti Energia Narva Elektriijaamad AS(EE)		x
Eesti Pank	x	
Enefit SIA (LV)		x
Enefit UAB (LT)		x
Nordic Power Management OÜ (EE)	x	
OÜ Baltic Energy Services (EE)	x	



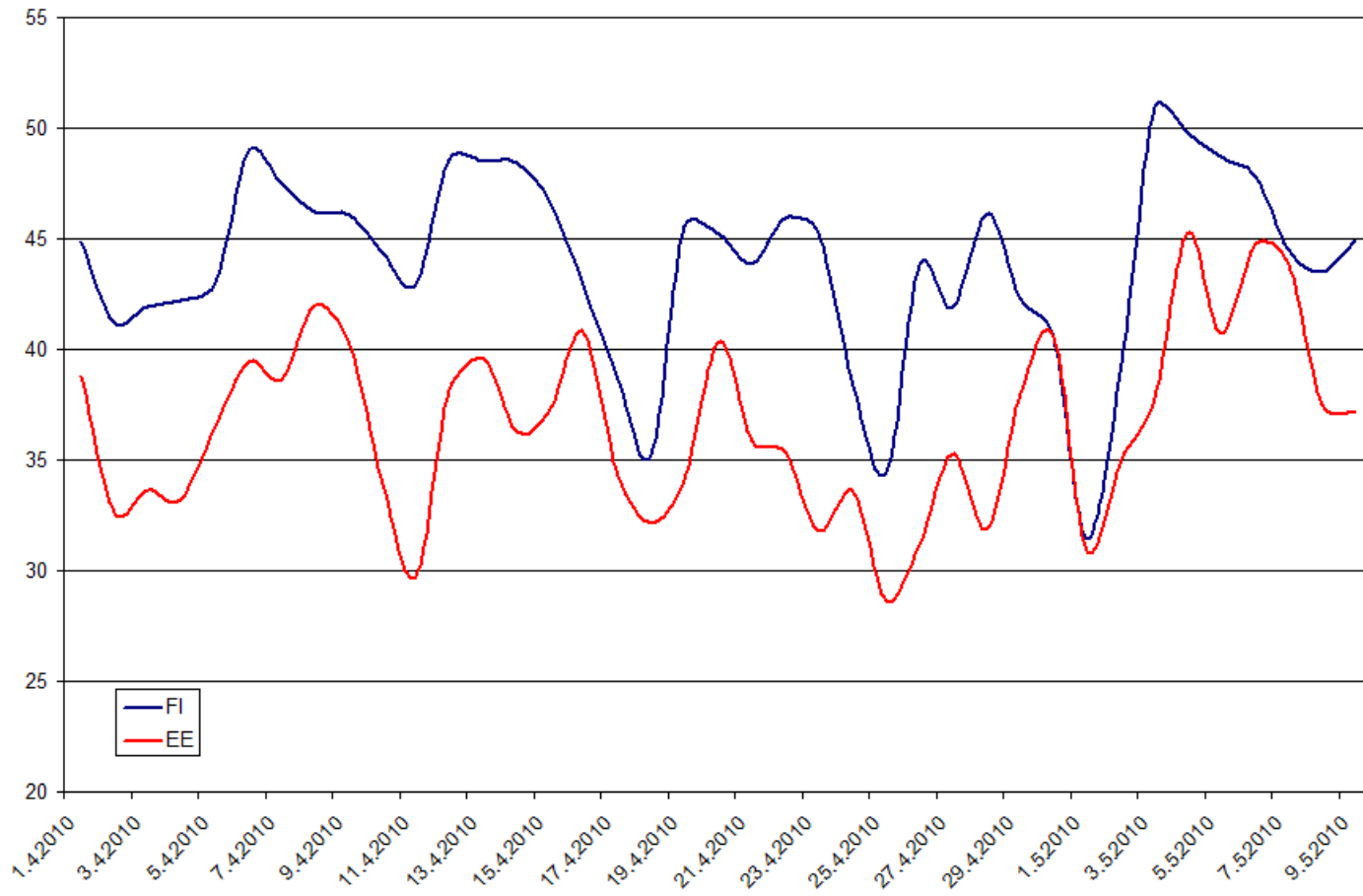
Prices and bottlenecks

- Congestion rent from the Estlink cable during April 2010 was 1,49 M€
- Prices were different in 78% of hours
- The connection between Finland and Estonia has had the most bottlenecks in the Elspot-market area
- April 2010 volumes:
 - Purchase 134 GWh (167 MW/h)
 - Sale 308 GWh (385 MW/h)



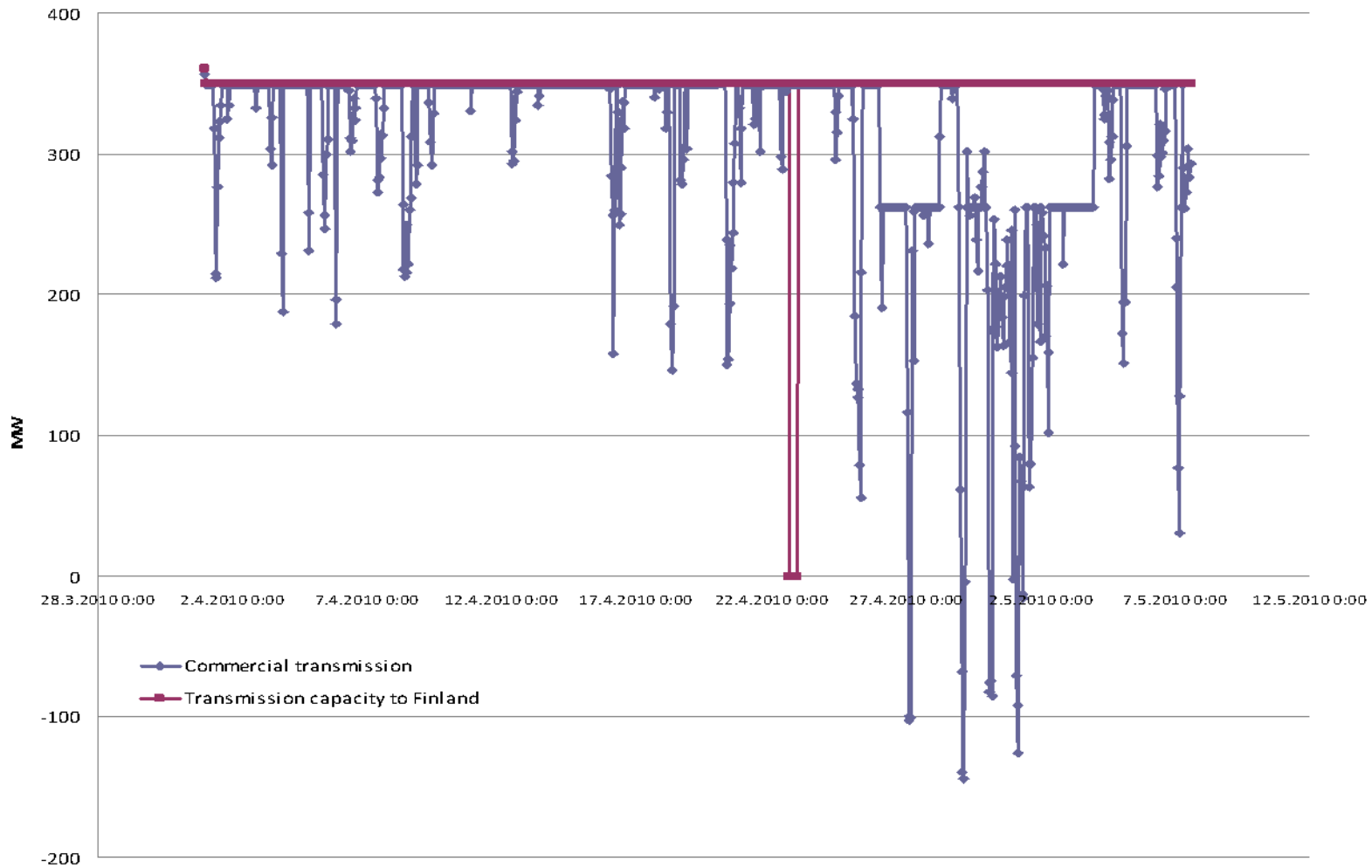


Elspot prices 1.4.2010->



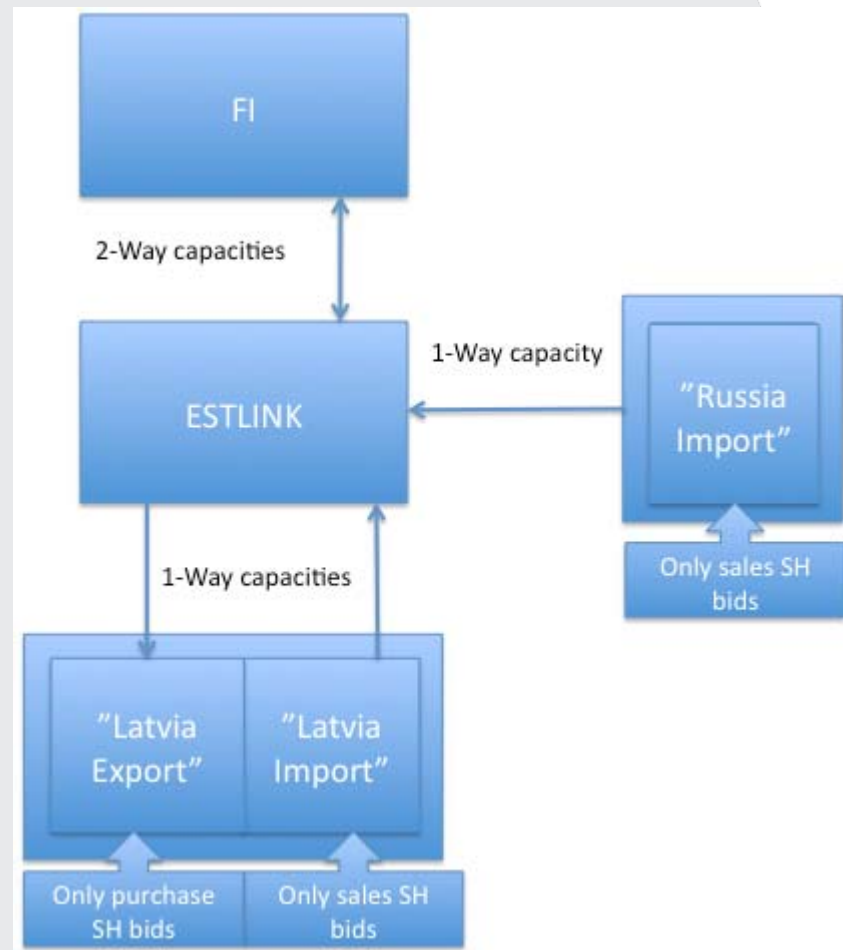


Hourly transmission From Estonia to Finland 1.4-7.5.2010



Estlink capacity bidding for the Latvian and Russian borders

- Capacity:
 - TSO will publish ATC principles
 - NPS will publish ATC same time with Nordic values
- Bidding:
 - Customers will bid to separate portfolios for purchase and sales
 - Max volume per portfolio = ATC
 - NPS reports traded volumes per portfolio to TSO
- Rulebook:
 - Optimization area for external capacities
 - Only hourly bidding
 - One portfolio fee includes purchase and sales



NPS BEMIP project: Creation of trustworthy reference price for the Baltic electricity markets

Main goals for the project:

Day-ahead market: one or more price areas in the Baltic countries.

Intra-day market in the Baltic countries and EU cross borders.

Project timeline: 1,5-2 years.

participants:

AS Augstsprieguma Tīkls

Elering OÜ

Litgrid UAB

Fingrid Oyj

Svenska Kraftnät

and NordPool Spot AS



NPS BEMIP project: Main principles

- New price area should be opened when conditions are ready for market opening.
 - Local TSO and NPS will make opening decision.
- Intra-day market will be developed between areas and inside areas when price signal is reliable and cross-border capacity is available.
 - Local TSO and NPS will make opening decision.
- In the Phase II it will be very important to regularly update ministries and authorities about progress.
- Estimated time schedule for the project is 1,5-2 years. Some countries could be ready before others.